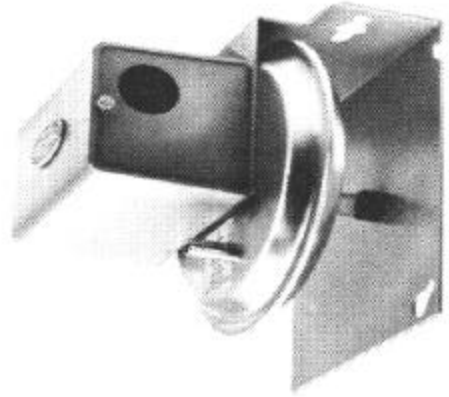


PC-301 Air Proving Switch

Mounting the PC-301 air flow switch:

Mount the airflow switch in the supply or return duct using the screws supplied. Mount the device so that the diaphragm is in a vertical position as shown at right.

If the airflow switch is to be mounted on the return duct (vacuum), then mount it in a vertical position by the small plate. Drill a 7/16" hole in the side of the duct and connect the supplied tubing to the low pressure tap on the airflow switch and then run it through the drilled hole in the duct. Put no more than 2" of tubing into the duct. Caulk around the tubing where it enters the duct. The high-pressure tap is left open to atmosphere.



If the airflow switch is to be mounted to the supply duct (pressure), then simply drill a 7/16" hole in the side of the duct, apply caulking to the large plate, and mount the device with the large plate to the duct and the high-pressure tap/tubing mated the hole. The low-pressure tap is left open to atmosphere.

MOUNTING DIAGRAMS

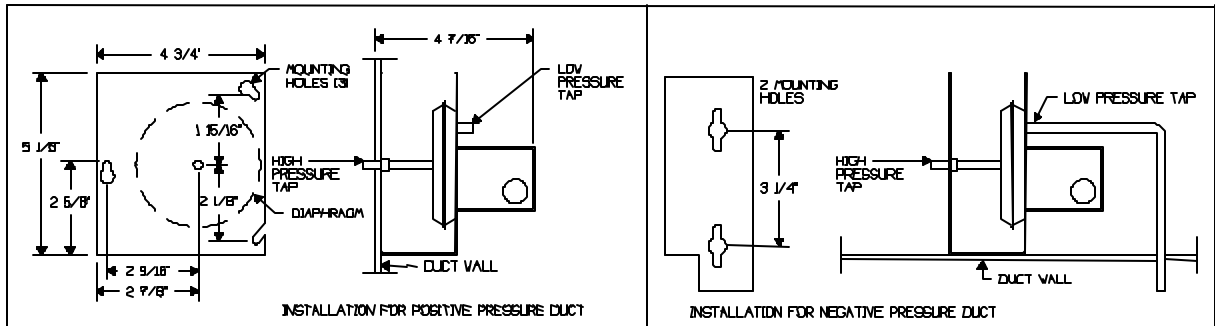


TABLE 1. MAXIMUM ELECTRICAL SWITCH RATINGS

Vac	Full Load Amps	Locked Rotor Amps	Pilot Duty (VA)	Non-Inductive Amps
24V	-	-	60	10
120V	6.25	37.5	300	10
240V	3.1	18.6	300	10
277V	2.7	16.2	300	10

WIRING DIAGRAM

